



A Guide to using the "Model Chicken" spreadsheet

First of all, we must make it clear that the figures obtained from using this spreadsheet are intended purely as a guide and are not a guarantee of performance.

As with Stocks and Shares , the figures can be better or worse.

Good husbandry and attention to details of management are all important in order to achieve the best results.

We also cannot guarantee that by using this spreadsheet you will not blow up your computer, your Grandmothers teeth will not fall out , or that your budgie will not burst into flames!

What we can state, is that using the spreadsheet is not "Rocket Science". It is simple to use and easy to understand.

We have tried to keep the features used to the bare minimum in order that it can be used in as many spreadsheet programmes as possible.

Those we have tested are:-

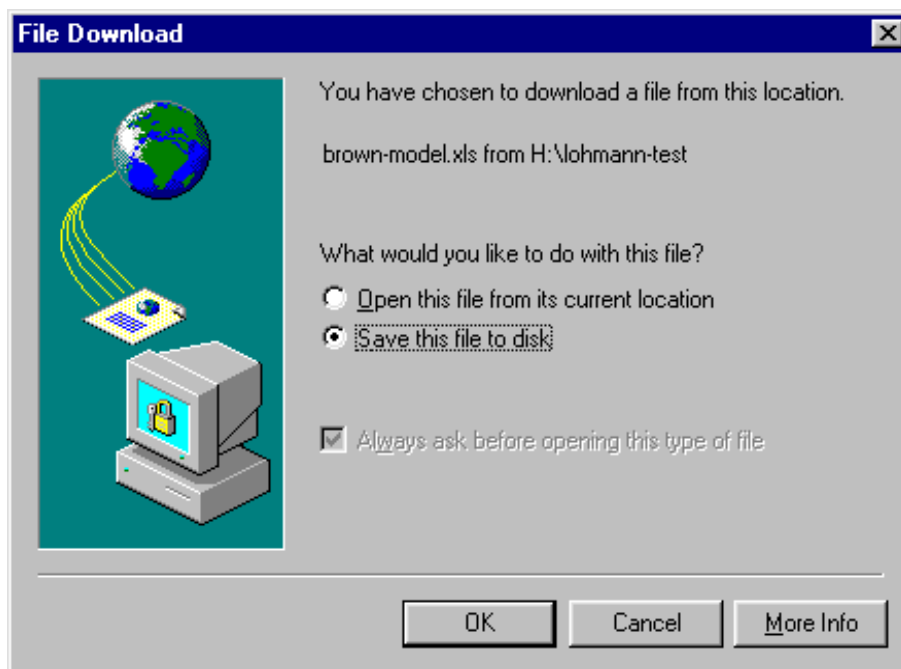
- Microsoft Excel (95/97/2000)
- Corel Quattro Pro
- Sun StarOffice
- Gnome Gnumeric

One point to mention is that, if you happen to be using Microsoft Internet Explorer to download the spreadsheets and you have Microsoft Excel installed on your computer, you may see the spreadsheet details open **inside** the browser window itself. Most other combinations of browser and spreadsheet software will prompt you on the usual download details (more later).

So, the usual disclaimers and preamble out of the way, let's look at actually using the software.

As stated earlier, you may have the combination of software that opens the spreadsheet in the browser window for you.

If this is not the case then pressing on the button stating you want to download will pop up a message much like that below:-



We suggest that you choose the option marked "Save this file to disk" as you can then use the spreadsheet from your own computer rather than having to download it each time.

It doesn't matter where you save it as long as you remember where you put it !

Once you have downloaded the software and loaded it into your spreadsheet programme you will see the opening screen :-

LOHMANN BROWN

Bird Numbers	1000	Total Production	302360
Average Feed Price	£130.00	Egg Income	
Egg Prices		XL	£1,134.70
XL	£0.79	Large	£9,061.61
Large	£0.70	Medium	£4,478.53
Medium	£0.48	Small	£400.92
Small	£0.27	Total	£15,075.75
2nds Price	£0.21	Total Feed	44.876
		Total Feed Cost	£5,833.88
		Overall Margin	£9,241.90

* The above model assumes all eggs are Grade "A", if however there are 2nds then the Overall Margin will change as follows:-

	2ND'S TOTAL (DOZ)	2ND'S INCOME	ADJUSTED MARGIN
AT 6% SECONDS	1512	£317.48	£8,654.83
AT 7% SECONDS	1764	£370.39	£8,556.99
AT 8% SECONDS	2016	£423.30	£8,459.14
AT 9% SECONDS	2268	£476.22	£8,361.30
AT 10% SECONDS	2520	£529.13	£8,263.45

We are using Microsoft Excel in these examples as this may be the most likely spreadsheet programme that you will have on your machine.

Whilst this is the "opening page", it may be in fact be the only page that you need to look at.

The box on the left of the screen is where you type your figures in and the one on the right is where the relevant results are displayed.

The third box underneath contains modifying figures for amounts of 2nds in the egg output.

Let's take a look at the figures you need to input:-

Bird Numbers	1000
Average Feed Price	£130.00
Egg Prices	
XL	£0.79
Large	£0.70
Medium	£0.48
Small	£0.27
2nds Price	£0.21

* The above model assumes all eggs are Grade "A", if however

Bird Numbers	This should be self-explanatory
Average Feed Price	This is the average cost of the feed over the life of the flock in £ pounds Stirling. It is possible to use a more accurate model than this if desired. This will be explained later.
Egg Prices	The current prices for each of the egg grades shown. Entered as £ pounds Stirling
2nds Price	The current price of second quality eggs, again in £ pounds Stirling.

As you enter the figures into the boxes on the left you will see the results figures on the right changing as you type :-

Total Production		302360
Egg Income	XL	£1,134.70
	Large	£9,061.61
	Medium	£4,478.53
	Small	£400.92
	Total	£15,075.75
Total Feed		44.876
Total Feed Cost		£5,833.86
Overall Margin		£9,241.90

if there are 2nds then the Overall Margin will change as follows:-

As stated on the screen , the figures in the boxes assume that all eggs are "Grade A".

Because this is unlikely to be the case in all circumstances, there is a list of adjustments to the egg income and overall margin dependent upon the price and the number of second quality eggs.

This is shown in the box below the two main boxes:-

	<u>2ND'S TOTAL(DOZ)</u>	<u>2ND'S INCOME</u>	<u>ADJUSTED MARGIN</u>
AT 6% SECONDS	1512	£317.48	£8,654.83
AT 7% SECONDS	1764	£370.39	£8,556.99
AT 8% SECONDS	2016	£423.30	£8,459.14
AT 9% SECONDS	2268	£476.22	£8,361.30
AT 10% SECONDS	2520	£529.13	£8,263.45

The results on this opening page are calculated from those on two additional pages in the spreadsheet.

The method of calculation is the same for both the Lohmann Brown and the Lohmann Tradition, only the standards figures are different in each case.

Calculations are extremely simple and basically fall into two categories:-

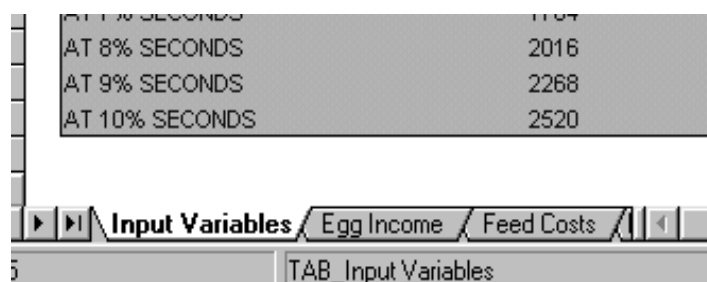
Egg Income and Feed Costs.

Because the calculations can be divided so clearly we decided to show both these sets of figures on a separate calculation page.

Each page shows the results at every week of the flocks life.

The standards figures that are used are the same figures that we use and rely upon and are not "tweaked" for marketing advantage. If they look good to you they look good to us.

You can reach these calculation pages by clicking on the "tabs" at the bottom of the spreadsheet page:-



The screenshot shows a spreadsheet with a table of data and a tabbed interface at the bottom. The table has three rows of data:

AT 7% SECONDS	1784
AT 8% SECONDS	2016
AT 9% SECONDS	2268
AT 10% SECONDS	2520

Below the table is a tabbed interface with three tabs: "Input Variables", "Egg Income", and "Feed Costs". The "Input Variables" tab is currently selected. Below the tabs is a status bar showing "TAB_Input Variables".

The two calculations pages are shown on the next page. Resolution is poor due to the size of the printed page but you can see the details present on each page better using the actual programme itself.

Microsoft Excel - brown-model.xls

File Edit View Insert Format Tools Data Window Help

NG2 =SUM(N4:N61)

	A	B	C	D	E	F	G	H	I	J	K	L
1		% birds	actual birds	% hen week	total	Eggs	Income	Eggs	Income	Eggs	Income	Eggs
2	Age	alive	alive	production	eggs/week	XL %	XL	Large %	Large	Medium %	Medium	Small %
3												
4	16	100	1000	0.0	0	0.0	£0.00	0.0	£0.00	0.0	£0.00	0.0
5	17	100	1000	0.0	0	0.0	£0.00	0.0	£0.00	0.0	£0.00	0.0
6	18	100	1000	0.0	0	0.0	£0.00	0.0	£0.00	0.0	£0.00	0.0
7	19	100	1000	0.0	0	0.0	£0.00	0.0	£0.00	0.0	£0.00	0.0
8	20	100	1000	10.0	700	0.0	£0.00	0.0	£0.00	0.0	£0.00	100.0
9	21	100	1000	40.0	2800	0.0	£0.00	0.0	£0.00	10.0	£11.20	90.0
10	22	100	1000	70.0	4900	0.0	£0.00	0.0	£0.00	19.0	£37.24	81.0
11	23	99.9	999	85.0	5944	0.0	£0.00	0.3	£1.04	44.0	£104.62	55.7
12	24	99.8	998	90.0	6287	0.0	£0.00	1.4	£5.13	63.8	£160.45	34.8
13	25	99.7	997	92.0	6421	0.0	£0.00	3.7	£13.86	75.0	£192.62	21.3
14	26	99.6	996	93.0	6484	0.0	£0.00	5.2	£19.67	75.9	£196.85	18.9
15	27	99.5	995	94.0	6547	0.0	£0.00	16.6	£63.40	76.0	£199.03	7.4
16	28	99.4	994	94.0	6541	0.0	£0.00	20.2	£77.07	73.8	£193.08	6.0
17	29	99.3	993	93.0	6464	0.1	£0.43	27.7	£104.45	68.3	£176.61	3.9
18	30	99.2	992	92.7	6437	0.2	£0.85	31.7	£119.03	65.1	£167.62	3.0
19	31	99.1	991	92.4	6410	0.4	£1.69	34.6	£129.37	62.4	£159.99	2.6
20	32	99	990	92.1	6383	0.5	£2.10	37.4	£139.25	59.8	£152.67	2.3
21	33	98.9	989	91.8	6355	0.6	£2.51	40.3	£149.40	57.2	£145.41	1.9
22	34	98.8	988	91.5	6328	0.8	£3.33	42.4	£156.52	55.1	£139.47	1.7
23	35	98.7	987	91.2	6301	1.0	£4.15	44.5	£163.56	53.0	£133.58	1.5
24	36	98.6	986	90.9	6274	1.0	£4.13	46.7	£170.91	50.9	£127.74	1.4
25	37	98.5	985	90.6	6247	1.2	£4.94	48.8	£177.83	48.8	£121.94	1.2
26	38	98.4	984	90.3	6220	1.4	£5.73	50.4	£182.86	47.1	£117.18	1.1
27	39	98.3	983	90.0	6193	1.6	£6.52	51.9	£187.49	45.5	£112.71	1.0
28	40	98.2	982	89.7	6166	1.8	£7.31	53.5	£192.43	43.8	£108.03	0.9

Ready NUM

Microsoft Excel - brown-model.xls

File Edit View Insert Format Tools Data Window Help

L10

	A	B	C	D	E	F	G	H	I	J	K
1		% birds	actual birds	feed	feed tonnes	feed type	feed cost	weekly	margin	cumulative	
2	Age	alive	alive	p/week kgs	p/week		p/tonne	feed cost	egg/feed	margin	
3											
4	16	100.0	1000	0.70	0.700	prelay	£130.00	£91.00	-£91.00	-£91.00	
5	17	100.0	1000	0.70	0.700	prelay	£130.00	£91.00	-£91.00	-£182.00	
6	18	100.0	1000	0.70	0.700	superlay	£130.00	£91.00	-£91.00	-£273.00	
7	19	100.0	1000	0.70	0.700	superlay	£130.00	£91.00	-£91.00	-£364.00	
8	20	100.0	1000	0.70	0.700	superlay	£130.00	£91.00	-£75.25	-£459.25	
9	21	100.0	1000	0.74	0.742	superlay	£130.00	£96.46	-£28.56	-£487.81	
10	22	100.0	1000	0.76	0.763	superlay	£130.00	£99.19	£27.35	-£460.46	
11	23	99.9	999	0.78	0.783	superlay	£130.00	£101.82	£78.33	-£382.13	
12	24	99.8	998	0.82	0.817	superlay	£130.00	£106.26	£108.56	-£293.56	
13	25	99.7	997	0.82	0.817	superlay	£130.00	£106.15	£131.10	-£192.46	
14	26	99.6	996	0.82	0.816	superlay	£130.00	£106.04	£138.05	-£15.58	
15	27	99.5	995	0.82	0.815	superlay	£130.00	£105.94	£167.39	£182.98	
16	28	99.4	994	0.82	0.814	superlay	£130.00	£105.83	£173.14	£356.12	
17	29	99.3	993	0.82	0.813	superlay	£130.00	£105.72	£181.44	£537.56	
18	30	99.2	992	0.82	0.812	superlay	£130.00	£105.62	£186.23	£723.79	
19	31	99.1	991	0.82	0.812	superlay	£130.00	£105.51	£189.29	£913.87	
20	32	99.0	990	0.82	0.811	superlay	£130.00	£105.41	£191.91	£1,104.99	
21	33	98.9	989	0.82	0.810	superlay	£130.00	£105.30	£194.74	£1,299.73	
22	34	98.8	988	0.82	0.809	superlay	£130.00	£105.19	£196.55	£1,496.28	
23	35	98.7	987	0.82	0.808	superlay	£130.00	£105.09	£198.33	£1,694.61	
24	36	98.6	986	0.82	0.808	frange 1	£130.00	£104.98	£199.76	£1,894.39	
25	37	98.5	985	0.82	0.807	frange 1	£130.00	£104.87	£201.52	£2,095.90	
26	38	98.4	984	0.82	0.806	frange 1	£130.00	£104.77	£202.55	£2,298.45	
27	39	98.3	983	0.82	0.805	frange 1	£130.00	£104.66	£203.46	£2,501.91	
28	40	98.2	982	0.82	0.804	frange 1	£130.00	£104.55	£204.46	£2,706.37	

Ready NUM

We mentioned earlier that it was possible to fine-tune the rather simplistic idea of an average feed price over the life of the flock.

This is simplicity itself due to the uncomplicated nature of the spreadsheet model.

What needs to be changed is the cost of feed during each week of the flock.

This can be done by clicking on the "Feed Costs" tab.

You will see two columns of the spreadsheet marked "feed type" and "feed cost p/tonne"

These columns list the ration and cost per tonne of feed for each week of the flock.

Simply overtype these figures with your own for the respective ration types and costs during the weeks that you wish to change.

Remember that if you are intending to save the results of any changes you make during using these spreadsheets, use a different file name from the original or you will lose the initial details !

	F	G
es	feed type	feed cost p/tonne
	prelay	£130.00
	prelay	£130.00
	superlay	£130.00
	superlay	£130.00
	superlay	£130.00
	superlay	£130.00
	superlay	£130.00
	superlay	£130.00
	superlay	£130.00
	superlay	£130.00
	superlay	£130.00
	superlay	£130.00
	superlay	£130.00
	superlay	£130.00
	superlay	£130.00
	superlay	£130.00
	superlay	£130.00
	superlay	£130.00
	superlay	£130.00
	superlay	£130.00
	superlay	£130.00

We hope you can see that these spreadsheets are very easy to use but may be useful tools in helping you understand the performance of the birds in "Model" circumstances.

If you find that you are unable to use these features due to lack of compatible software then please contact us and we would be happy to provide you with either printed or electronic models base on the figures that you give us.

LOHMANN GB LTD.